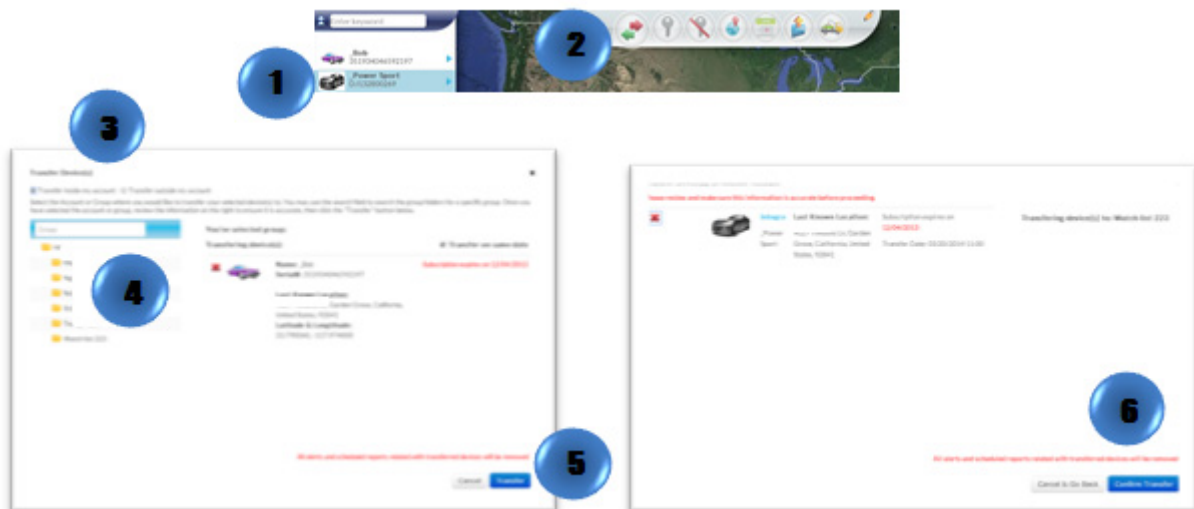


Transfer Device

1. In the Map View, select the vehicle/device
2. Click on the "Transfer Command" icon on the toolbar
3. A new window will appear. Select between "Transfer inside my account" or "Transfer outside my account"
4. Select the group to transfer the device
5. Click on "Transfer"
6. A new window will appear for review. Click on "Confirm Transfer"



Or

1. Locate your vehicle/device.
2. Click on your vehicle/device in the map. A new information bubble will appear. Click on "Transfer"
3. Follow steps 3 through 6

